



**SPREAD THE GOSPEL.
PLANT LUTHERAN CHURCHES.
SHOW MERCY.**

125
CELEBRATING
years

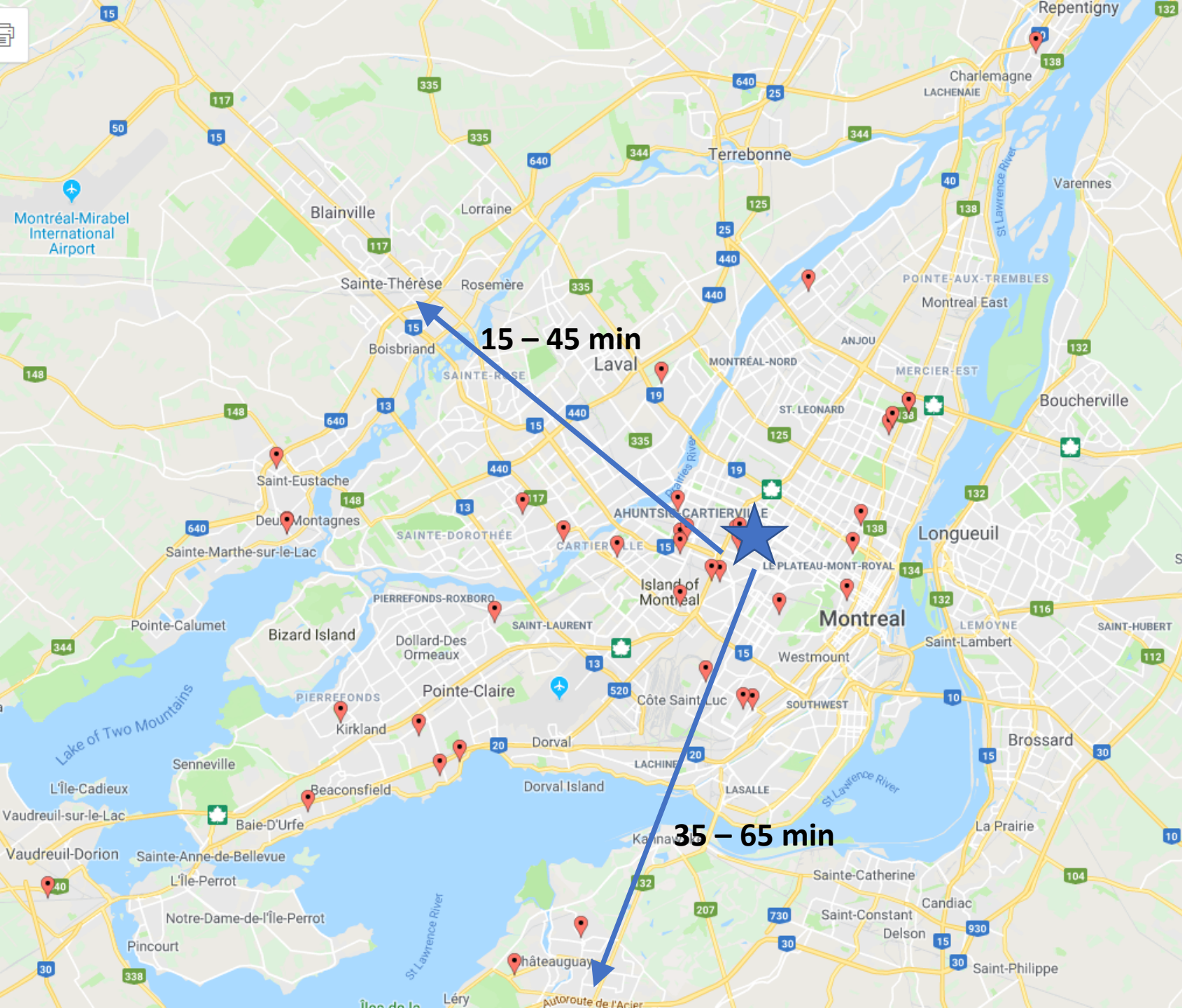
Montreal, Here and Now

Understanding the Current Context



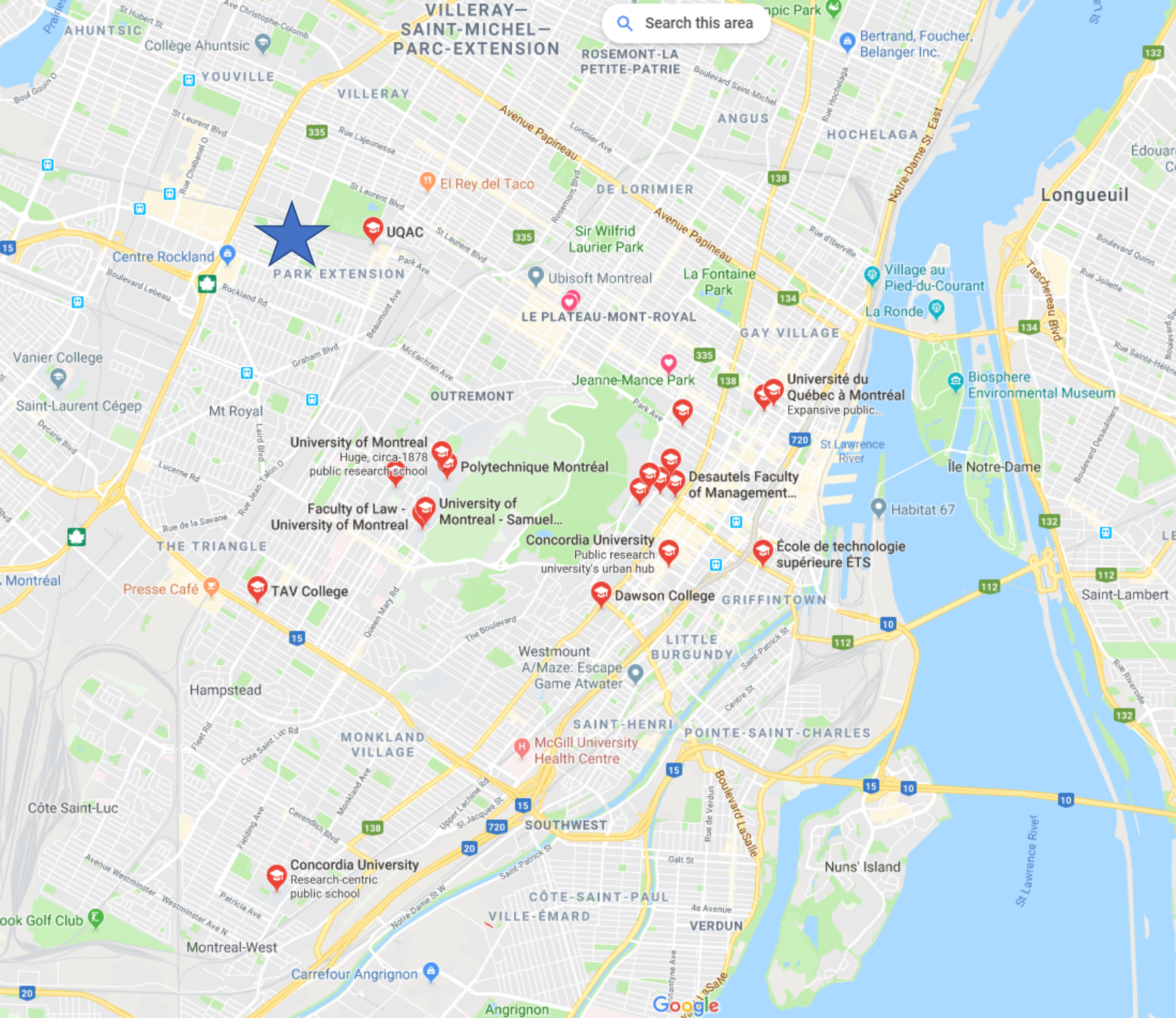
Life in Montreal





- **Navigation**
 - Two dozen bridges
 - Conemaggedon
- **East Coast City**
 - High transit
 - High density
 - 4 million
- **Multilingual**
 - 66% French
 - 14% English
 - 4% Arabic
 - 3% Spanish





- Universities

- UQAM
- U de M
- McGill
- Concordia
- 170,000 + Students

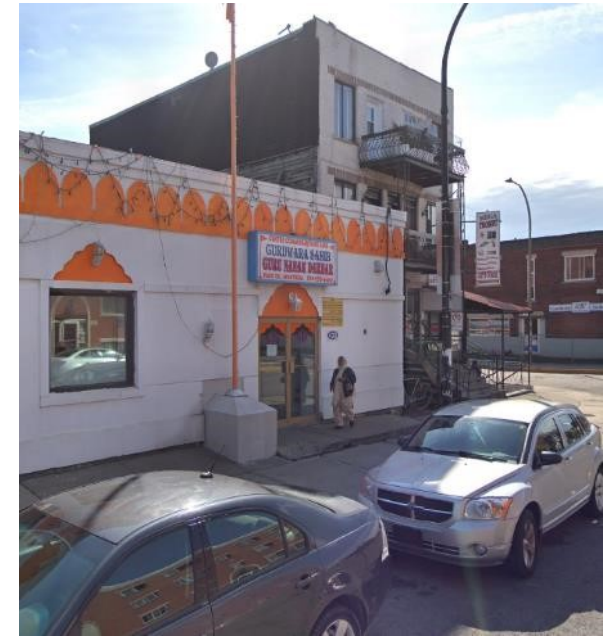
- Home of...

- LGBTQ
- Aviation
- High-Tech
- Corruption





Photo/The Canadian Press, Graham Hughes



Religion in Montreal



A Secular City Seeking Spirituality

- A non-practicing city (Bill 21, closing churches)
- A city of immigrants (150,000 Muslims)
- One of the highest suicide rates in the Canada
- Lowest rates of marriage, highest in cohabitation
- Largest unreached people group in North America
- Many open to spiritual conversations



Parc-Extension

- 30,000 people in ½ a square mile
- Around 2/3rd are immigrants
- 61% are visible minorities
- 35% have no diploma or degree
- 44% considered low income
- 75% rent their homes
- 11% can speak neither English or French

A Plan for Ascension (LCMS)

The Work the Lord has Given Us



Our Mission Team

- All members of Ascension invited, eight participated
- “Kingdom of the Right” vs Council (Kingdom of the Left)
- Meetings every other month, starting January
- Brainstormed opportunities and challenges
- Developed positions and goals
- Identified mission/evangelism obstacles



Witness,
Mercy,
Life Together.
+
In Christ,
for the Church
and the World.



Witness, Mercy, Life Together

- Basis for Positions and Goals:
 - Spread the Gospel
 - Show Christ's Mercy
 - Plant Lutheran Churches



Congregation's Strengths

- 1) History of engaging the community surrounding Ascension, especially the variety of peoples that have come to Quebec and Montreal.
- 2) Congregational flexibility in adapting to changing circumstances, to a higher degree than is usually found in a congregation of its age. Willingness to explore ministry in other languages.
- 3) Good sized facility, maintained, centrally located within the Greater Montreal area, housing for a missionary and space for mission
- 4) Missionaries and pastors have linguistic gifts (French, English, Spanish, Chinese). Excellence in preaching is one of the mission's strengths.

Congregation's Weaknesses

- 1) Small and without a core of “wealthy donors” that enables other smaller congregations to be self-supporting
- 2) Montreal more of a Latin city than a typical Anglo North American city. Other church bodies have identified this unique characteristic as requiring greater effort than elsewhere.



WITNESS

Strategic Position 1:

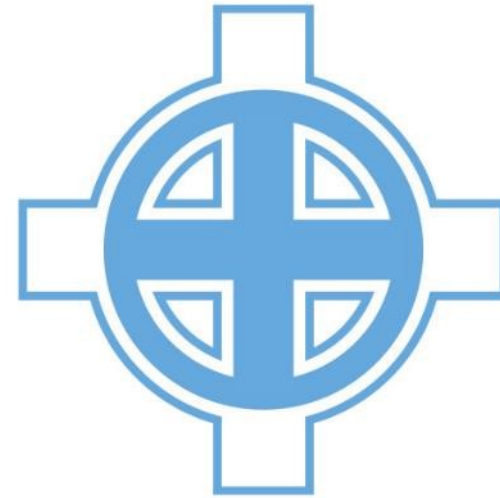
Establish Congregation(s)

Strategic Position 2:

Increase Capacity for Ministry

SP 1: Establish Congregation(s)

- **#1: INCREASE VISIBILITY**
 - Logo (Jess Rosenwinkel)
 - Banners
 - New system needed
 - \$1K CAD project
 - Signage
 - High pedestrian traffic
 - Two “facilities”
 - \$25K CAD project
- ASK: Funding



ASCENSION LUTHERAN CHURCH

“The Good News Place”



ascensionlutheran.ca



SP 1: Establish Congregation(s)

- **#2: EVALUATE FACILITY**
 - Narthex Space
 - Handicap Issues
 - Children's Space
 - Washroom Access
 - Outside Entrances
- **ASK: Funding/Time**

Engineer/Architect — Canada

 Short-term (individual and team)  Canada

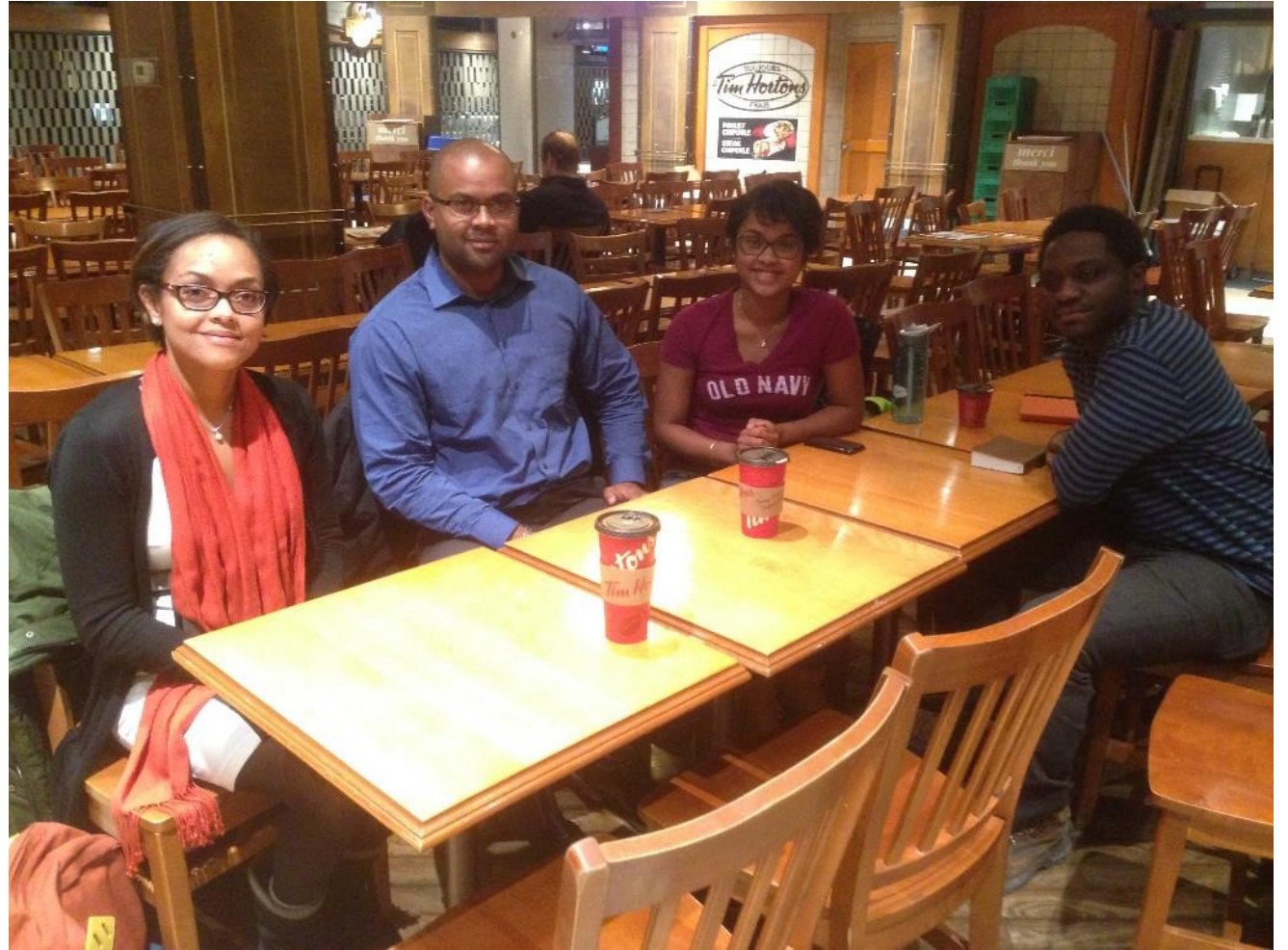


Needed Fall 2019!

Use your expertise as an engineer or architect to serve the only confessional Lutheran mission in Montreal, Canada's second largest city. The church building is in need of significant updates to better serve the congregation.

SP 1: Establish Congregation(s)

- **#3: STUDY OPPORTUNITIES**
 - Geographic
 - Linguistic
 - Generational
 - Campus
- ASK: Personnel



SP 1: Establish Congregation(s)

- **#4: INTERNET**
 - CV Outreach
 - Waybase
 - Podcast
 - Website
 - Social Media
- ASK: Personnel/Training



SP 1: Establish Congregation(s)

- **#5: NEW WORSHIP**
 - Geographic
 - Linguistic
 - “Stretch Goal”
- **ASK: Personnel**





SP 2: Increase Capacity

- **#1: MISSIONARY**
 - Alliance
 - NSM
- ASK: Personnel / Partner



SP 2: Increase Capacity

- **#2: LAY PEOPLE**
 - Training Needed
 - Mission Team
- ASK: Personnel



SP 2: Increase Capacity

- **#3: LOCAL LEADERS**
 - “Stretch Goal”
 - Path to Ord.
- ASK: Alliance

Apprendre l'anglais!

Learn English!

Gratuit / Free
Fall and Winter
Classes

ascensionlutheran.ca

514-272-8570

MERCY

Strategic Position 3:

Inside the Household of Faith

Strategic Position 4:

Outside the Household of Faith



SP 3: Inside the Household of Faith

- **#1: Elder Care**
 - Visits
 - Word and Sacrament
- **#2: Hardship Care**
 - Community Chest
 - Legal Help
- **ASK: Prayers**



SP 3: Outside the Household of Faith

- **#1: New Arrivals**
 - English Classes
 - Legal Assistance
- **#2: Deaconess**
 - Locally trained
 - Intern
 - NSM
- **ASK: Personnel**



SP 3: Outside the Household of Faith

- **#3: Volunteers**
 - Individuals
 - Builders
 - Designers
 - Summer vicars
 - Teams
 - Construction
 - Kids Camp
 - English
- **ASK: Volunteers**





Life Together

Strategic Position 5:

Within Local Body of Christ

Strategic Position 6:

With FORO Partners



SP 5: Increase Local Ties

- **#1: Fellowship Activities**
 - Four fellowship meals each year
 - Game nights
- **ASK: Prayers**



SP 6: FORO Partners

- **#1: Partners**
 - One annual meeting
 - Request to visit partner churches and build ties
 - Newsletter
- **ASK: Prayers – and Talk About This Mission!**



**MERCI
XIEXIE
SPASIBA
GRACIAS
SHUKRAN
OBRIGADO
THANK YOU
DHANYAVAAD**

Discussion